



Breathe Easily Sleep Well

## Specifications

Products	CPAP		Auto CPAP	
Models	RVC820	RVC830	RVC820A	RVC830A
Modes of operation	CPAP	CPAP	APAP& CPAP	APAP& CPAP
Devices features				
Dimensions (L × W × H)	205 × 154 × 197mm	205 × 154 × 197mm	205 × 154 × 197mm	205 × 154 × 197mm
Weight	1.7kg	1.7kg	1.7kg	1.7kg
Screen	LCD	TFT ( 2.8' )	LCD	TFT ( 2.8' )
IP code	IP22	IP22	IP22	IP22
Sound Pressure Level	30dB(A)	30dB(A)	30dB(A)	30dB(A)
Pressure range	4–20cm H <sub>2</sub> O	4–20cm H <sub>2</sub> O	4–20cm H <sub>2</sub> O	4–20cm H <sub>2</sub> O
Pressure tolerance	± 0.5cmH <sub>2</sub> O	± 0.5cmH <sub>2</sub> O	± 0.5cmH <sub>2</sub> O	± 0.5cmH <sub>2</sub> O
Auto pressure adjustment			●	●
Service reminding		●		●
EPS ( OFF–3cm )			●	
Mask fit		●	●	●
International AC input (110–240V)	●	●	●	●
Auto start	●	●	●	●
Auto stop	●	●	●	●
Clock and Alarm	●	●	●	●
Ramp ( 0–60min )	●	●	●	●
Auto leaking compensation	●	●	●	●
Power failure /Leaking alert	●	●	●	●
Auto altitude pressure compensation	●	●	●	●
Remote upgrading	●	●	●	●
ITS / ETS ( Inspiratory/Expiratory trigger sensitivity )				●
HUMIDIFICATION				
Tube drying	●	●	●	●
Integrated Humidifier	●	●	●	●
Dual back flow prevention	●	●	●	●
Water Capacity	350ml	350ml	350ml	350ml
Standard Compliance	IEC60601–1; IEC60601–1–2; ISO17510–1; ISO18185			
Operation Environment Range	Temperature: +5℃ ~ +35℃			
	Humidity: 10% ~ 95% ( Non–condensing )			
DATA				
Advanced event detection		●	●	●
Compliance data Record	●	●	●	●
Micro SD card	●	●	●	●
SOFTWARE				
ResView management software	●	●	●	●

Product Specification changes without any prior notification.

Distributor:



BeijingRongrui–Century Scie.& Tech.Co., Ltd.

ADD : 3rd Floor, No.1 Building ,NO.7 Yard, Fengxian  
Middle Road, Haidian District,100094 Beijing,China  
Tel : (86 10)51658220 Fax:(86 10)58711218  
Web : www.reswell.com.cn /www.r–rui.com  
Email : info@reswell.com.cn



ISO9001: 2000  
ISO EN 13485: 2003

- Advanced pressure adjustment algorithm
- Compact design and light weight
- Dual back flow prevention technology
- Integrated heated humidifier
- Service reminding function

- IP22 water/dust protection grade
- Mini SD Card (TF card) capability
- ResView management software
- Remote upgrading function
- Power failure/ leaking alert



## Continuous Positive Airway Pressure (CPAP)

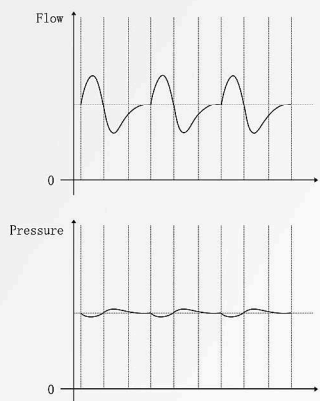
### Intended use:

Treatment for Obstructive Sleep Apnea (OSA) and hypoxemic syndrome triggered by OSA in patient.

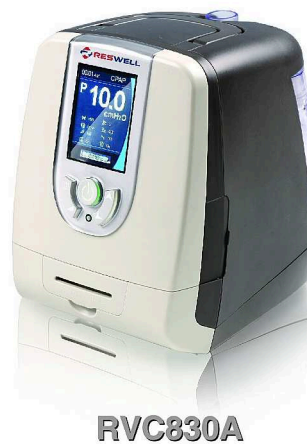
### Main features:

#### Enhanced dynamic pressure stability

Dynamic pressure in the clinical stability is better than static pressure. The dynamic pressure stability enhancement algorithm can effectively reduce the patient's work of breathing and maintain effectively breathing synchronization.



RVC820



RVC830A



RVC830



RVC820A

### Common Features:

Automatic leakage & altitude pressure compensation ensures therapy pressure.

Quiet delivery of the required pressure guarantees sleep continuity

Micro SD (TF) card makes it easy to download and transfer the long term monitoring information

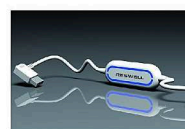
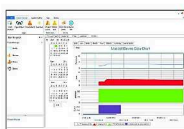
ResView management software allows a easy management of patient treatment

More choice for larger colorful screen supplying friendly interaction

Compact design with built-in humidifier is suitable for travelling

Dual backflow prevention technology & Higher water/dust protection grade ensure the device more durable

Tube drying technology reduces the condensation in the tubing and mask



## Auto Continuous Positive Airway Pressure (APAP)

### Product introduction:

More comfortable treatment for the Obstructive Sleep Apnea/Hypopnea Syndrome patient.

The device continuously monitors breathing and adjusts pressure automatically to meet patient needs as they change throughout the night. Thus the patients can receive the accurate pressure and a more effective therapy.

### Additional features:

Expiratory trigger sensitivity (ETS) and Inspiratory trigger sensitivity (ITS) enable the patient to choose the best time threshold to trigger the pressure change, providing a most comfortable inhaling and exhaling experience.

Exclusive EPS pressure variation algorithm remarkably improves patient comfort and increases the compliance.

Capability for enhanced compliance reporting of apnea/hypopnea index, leaking, pressure and so on.

### EPS pressure variation algorithm

EPS pressure variation algorithm is a technology designed to provide expiratory pressure smart release. The algorithm provides the best solution for patients who experience CPAP or APAP pressure discomfort. The algorithm can effectively reduce the patient expiratory pressure, and raise the pressure at the beginning of inspiration. The EPS levels can be set as 3 different reduced pressure values, each different EPS level meeting different patients' comfort requirements. The algorithm is applied to CPAP or APAP mode.

